

# Upgrade Standard Plumbing Kit



**Model: GBPKU**

## INCLUDED:

- 120 series Union Brass 8" on-center (2) handle chrome faucet
- T&S Brass Spray head with coiled hose
- 3½" Spin-N-Lock sink basket strainer
- Mesh strainer 1½"
- PVC "P" trap
- Stainless steel sprayer holder

## Features

- Designed for use with Groomer's Best bathing tubs
- Heavy-duty, industrial sprayer
- Flow rate: 3.85 GPM @ 60 psi
- One year warranty



*Designed by Experts, Trusted by Groomers*



# T&S BRASS AND BRONZE WORKS, INC.

2Saddleback Cove / P.O. Box1088  
Travelers Rest, SC 29690

Travelers Rest, SC: 800-476-4103 • Simi Valley, CA: 800-423 -0150 • Fax: 864-834-3518 • [www.tsbrass.com](http://www.tsbrass.com)

Model No.

**PJ-108H-CH01**

Item No.

This Space for Architect/Engineer Approval

Job Name \_\_\_\_\_ Date \_\_\_\_\_

Model Specified \_\_\_\_\_ Quantity \_\_\_\_\_

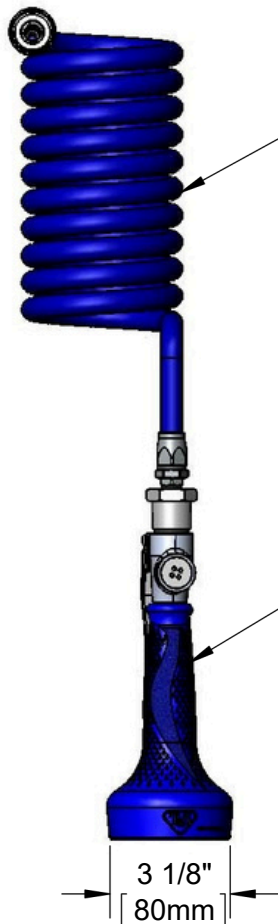
Customer/Wholesaler \_\_\_\_\_

Contractor \_\_\_\_\_

Architect/Engineer \_\_\_\_\_



Garden Hose  
Female Thread Inlet



Polyurethane  
Blue Coiled Hose

EB-0108-H  
Blue High Flow  
Spray Valve

21 5/8"  
[ 550mm ]

8"  
[ 203mm ]



Product Specifications:  
High Flow Blue Spray Valve, Polyurethane Blue Coiled  
Hose & Female Garden Hose Inlet

Product Compliance:  
NSF 61 Exempt (Non-Potable)



# Rinse Units PJ-108H-CH01

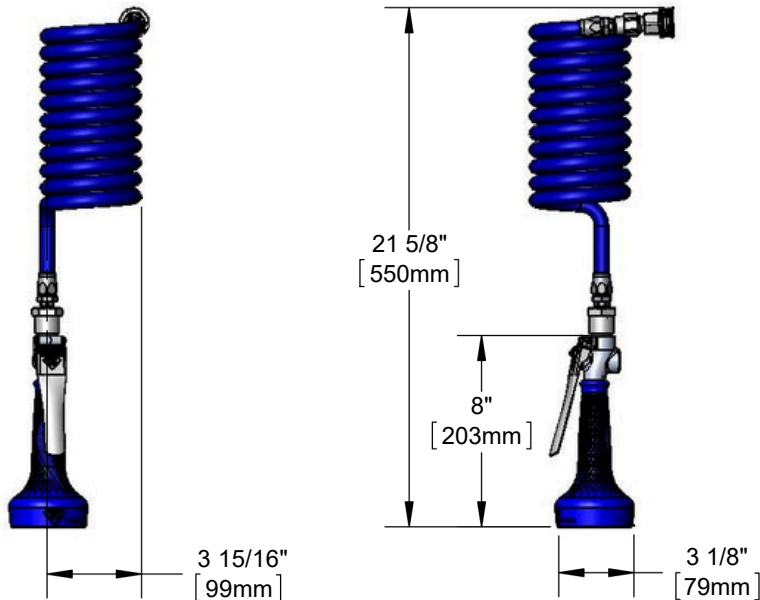
TAG:

*Pet Grooming*

## Architect/Engineering Specifications:

Blue coiled hose with high flow blue spray valve and female garden hose inlet.

Job Name \_\_\_\_\_  
Model Specified \_\_\_\_\_ Quantity \_\_\_\_\_  
Variations Specified \_\_\_\_\_  
Date \_\_\_\_\_



## Features & Benefits:

- Blue coiled Polyurethane hose
- High flow spray valve
- Garden hose female threat inet
- Material: Polyurethane hose and chrome plated brass spray valve and insulated rubber grip handle

## Product Compliance:

- N/A

**Warranty:** One Year (Limited)

## Performance Data:

- Pressure: 20 - 125 psi
- Temperature: 40F - 140F°
- Flow Rate: 3.85 GPM @ 60 psi



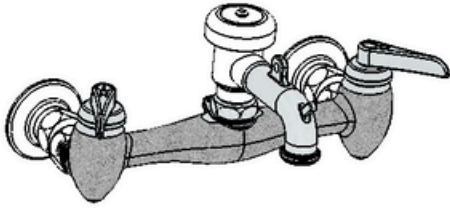
**T&S BRASS AND BRONZE WORKS, INC.**



• 2 Saddleback Cove • Travelers Rest, SC 29690  
Ph 800-476-4103 • Fax 864-834-3518  
• Simi Valley, CA • Ph 800-423-0150 • [www.tsbrass.com](http://www.tsbrass.com)

Date: 11/21/16

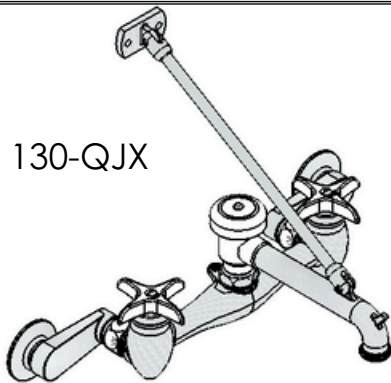
120 Series



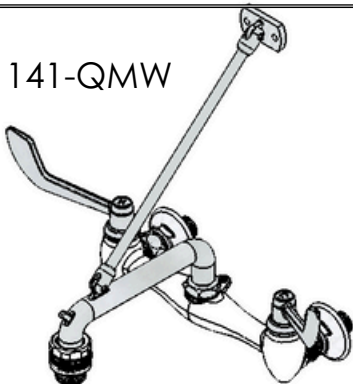
131-EA



130-QJX



141-QMW



## 120 & 130 & 140 Series

Features: Cast Brass Body  
 Chrome Plated Rough Or Polished Brass  
 Compression Or Quarter Turn Valves  
 Replaceable Seats

120 = 4" Spout Standard Vacuum Breaker Rough Chrome  
 121 = 4" Spout Standard Vacuum Breaker Polished Chrome  
 130 = 6.5" Spout Standard Vacuum Breaker Rough Chrome  
 = 6.5" Spout Standard Vacuum Breaker Polished Chrome  
 131 = 6.5" Spout Outlet Vacuum Breaker Rough Chrome  
 = 6.5" Spout Outlet Vacuum Breaker Polished Chrome  
 140  
 =  
 141  
 Add the Letters for the following features if you want them  
 added to the finished assembly.

The(\*) indicates that the part is the standard normal part for  
 this assembly and requires no lettering

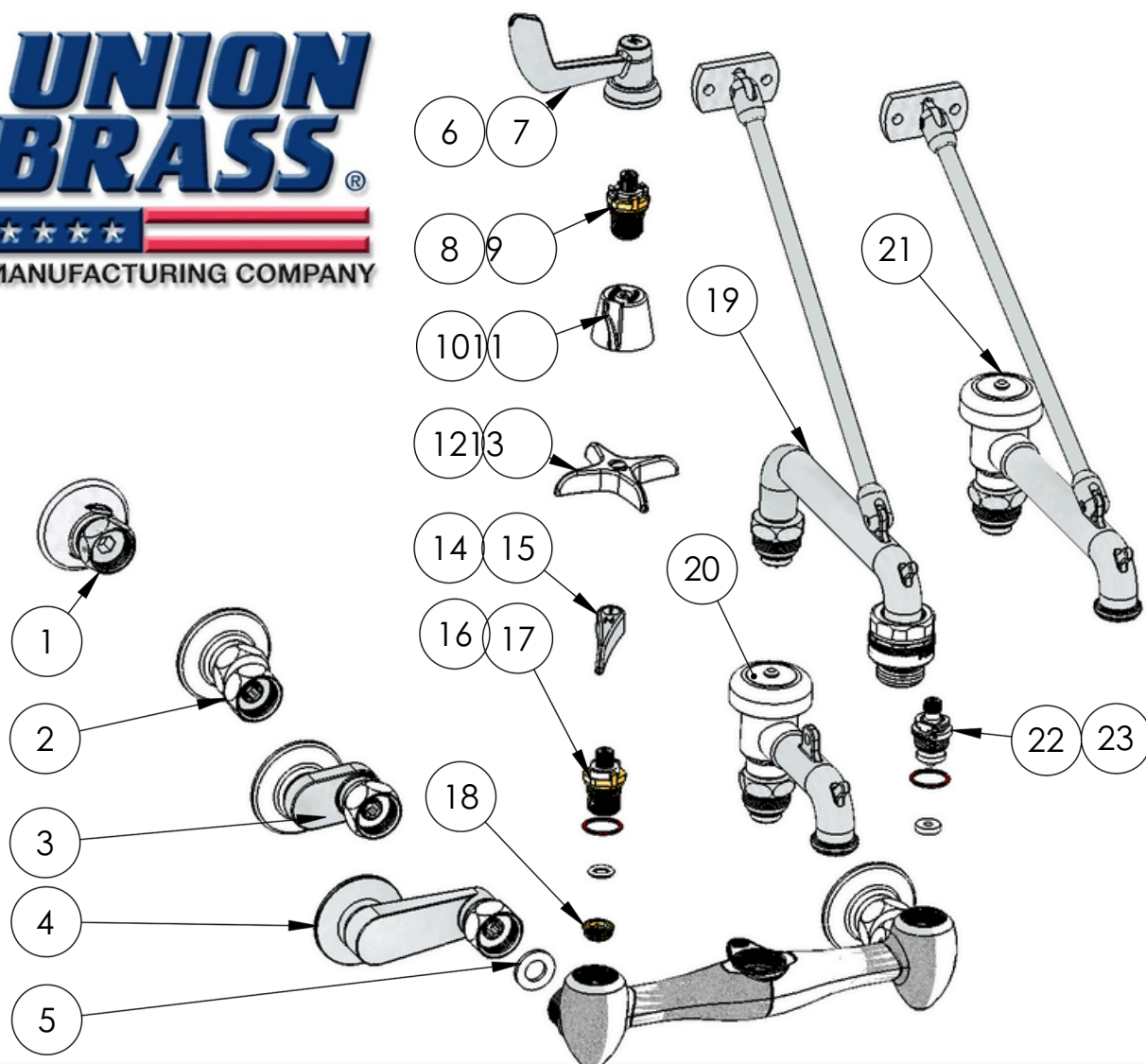
(\*) = Compression Valves (Q) = Quarter  
 Turn Ceramic Disk Valves (\*) = (M) =

3/16 Eccentric Female Flange (7&5/8 - 8&3/8" supply centers)  
 3/64 Eccentric Male Flange (7&29/32 - 8&3/32" supply centers)  
 (E) = 1" Eccentric Female Flange ( 6 - 10" supply centers)  
 (J) = 2.5" Eccentric Female Flange ( 3-13" supply centers)

(\*) = Blade Handle  
 (A) = Wall mount Style Handle  
 (X) = Cross Handle  
 (W) = Wrist Blade Handle

American Craftsmanship Since 1892

When Ordering Specify Complete Model Number



### 120, 130, 140 Series Mopsink Parts List

Item #	Part #	Description	Item #	Part #	Description
1	80025	Male Flange Assembly	15	80304	Blade Handle Assembly - Cold
2	88551	Female Flange Assembly	16	80079	1/4 Turn Ceramic Cartridge - Hot
3	89225	Eccentric Flange Assembly		12274	O-Ring
4	88235	Extra Wide Ecc. Flange Ass'y		13717	Fibre Washer
5	13703	Fibre Washer	17	80080	1/4 Turn Ceramic Cartridge - Cold
6	88184	Hospital Handle Assembly - Hot		12274	O-Ring
7	88185	Hospital Handle Assembly - Cold		13717	Fibre Washer
8	80089	Industrial 1/4 Turn Ceramic- Hot	18	12639	Seat
9	80090	Industrial 1/4 Turn Ceramic- Cold	19	80075	Long Spout W/Outlet Vacuum Breaker
10	80349	Handle Assembly - Hot	20	80085	Short Spout With Vacuum Breaker
11	80350	Handle Assembly - Cold	21	80095	Long Spout With Vacuum Breaker
12	80307	Cross Handle Assembly - Hot	22	88537	Compression Valve Ass'y - Hot
13	80308	Cross Handle Assembly - Cold	23	88538	Compression Valve Ass'y - Cold
14	80303	Blade Handle Assembly - Hot			

**UNION BRASS MANUFACTURING COMPANY**

2955 Lone Oak Circle, Eagan, MN 55121 Phone(651)454-8858 Fax(651)454-1228  
WWW.UNIONBRASS.COM