

Standard Plumbing Kit

Model: GBPK



INCLUDED:

- Union Brass 4" on-center (2) handle chrome faucet
- T&S Brass Spray head with coiled hose
- 3½" Spin-N-Lock sink basket strainer
- Mesh strainer 1½"
- PVC "P" trap
- Stainless steel sprayer holder

Features

- Designed for use with Groomer's Best bathing tubs
- Heavy-duty, industrial sprayer
- Flow rate: 3.85 GPM @ 60 psi
- One year warranty



Designed by Experts, Trusted by Groomers

UNION BRASS MFG. CO.

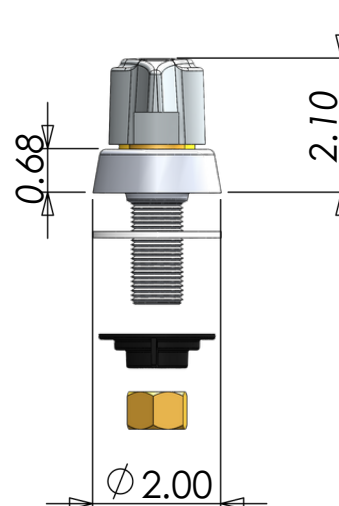
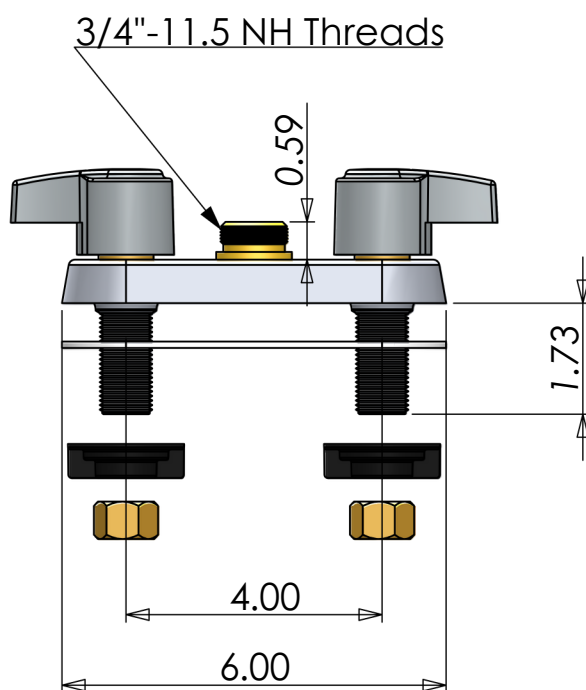
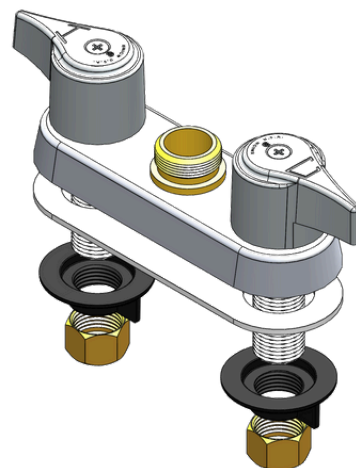
2955 Lone Oak Circle, Eagan, MN 55121
Phone (651) 454-8858 Fax (651) 454-1228
WWW.UNIONBRASS.COM



Model Number: 747X-H
Wall or Deck Mount
Faucet with Garden Hose
Thread Adapter

Features & Specifications

- Cast brass body
- Replaceable seats & stems
- Ceramic, 1/4 turn stems
- 1/2" NPS male shanks
- Polished chrome finish





T&S BRASS AND BRONZE WORKS, INC.

2Saddleback Cove / P.O. Box1088
Travelers Rest, SC 29690

Travelers Rest, SC: 800-476-4103 • Simi Valley, CA: 800-423 -0150 • Fax: 864-834-3518 • www.tsbrass.com

Model No.

PJ-108H-CH01

Item No.

This Space for Architect/Engineer Approval

Job Name _____ Date _____

Model Specified _____ Quantity _____

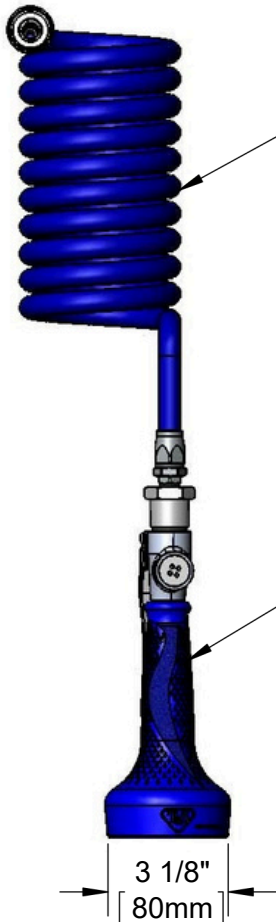
Customer/Wholesaler _____

Contractor _____

Architect/Engineer _____



Garden Hose
Female Thread Inlet



Polyurethane
Blue Coiled Hose

EB-0108-H
Blue High Flow
Spray Valve

21 5/8"
[550mm]

8"
[203mm]



Product Specifications:
High Flow Blue Spray Valve, Polyurethane Blue Coiled
Hose & Female Garden Hose Inlet

Product Compliance:
NSF 61 Exempt (Non-Potable)



Rinse Units PJ-108H-CH01

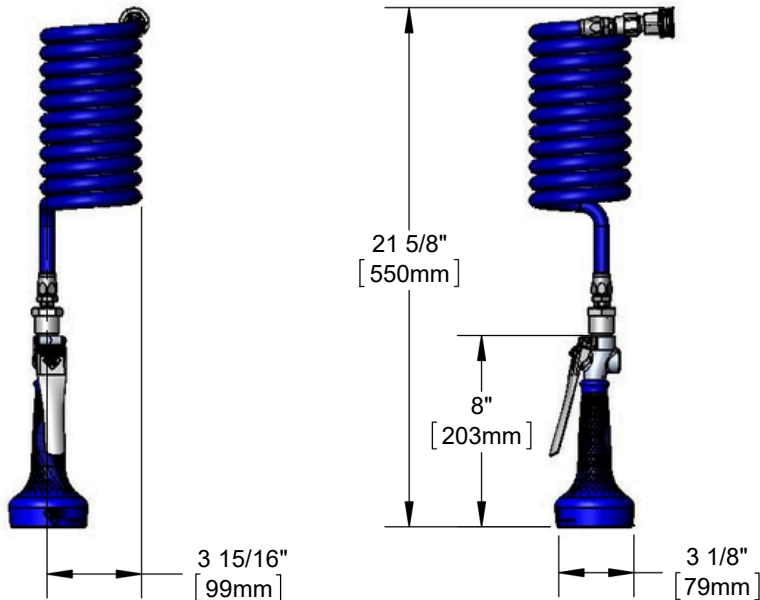
TAG:

Pet Grooming

Architect/Engineering Specifications:

Blue coiled hose with high flow blue spray valve and female garden hose inlet.

Job Name _____
Model Specified _____ Quantity _____
Variations Specified _____
Date _____



Features & Benefits:

- Blue coiled Polyurethane hose
- High flow spray valve
- Garden hose female threat inet
- Material: Polyurethane hose and chrome plated brass spray valve and insulated rubber grip handle

Product Compliance:

- N/A

Warranty: One Year (Limited)

Performance Data:

- Pressure: 20 - 125 psi
- Temperature: 40F - 140F°
- Flow Rate: 3.85 GPM @ 60 psi



T&S BRASS AND BRONZE WORKS, INC.



• 2 Saddleback Cove • Travelers Rest, SC 29690
Ph 800-476-4103 • Fax 864-834-3518
• Simi Valley, CA • Ph 800-423-0150 • www.tsbrass.com

Date: 11/21/16