

# Upgrade ADA Plumbing Kit

**Model: GBPKU-ADA**



## INCLUDED:

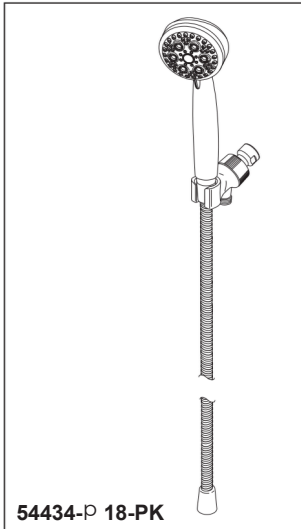
- 120 series Union Brass 8" on-center (2) handle chrome faucet
- ADA-compliant Delta sprayer
- 3½" Spin-N-Lock sink basket strainer
- Mesh strainer 1½"
- PVC "P" trap
- Stainless steel sprayer holder

## Features

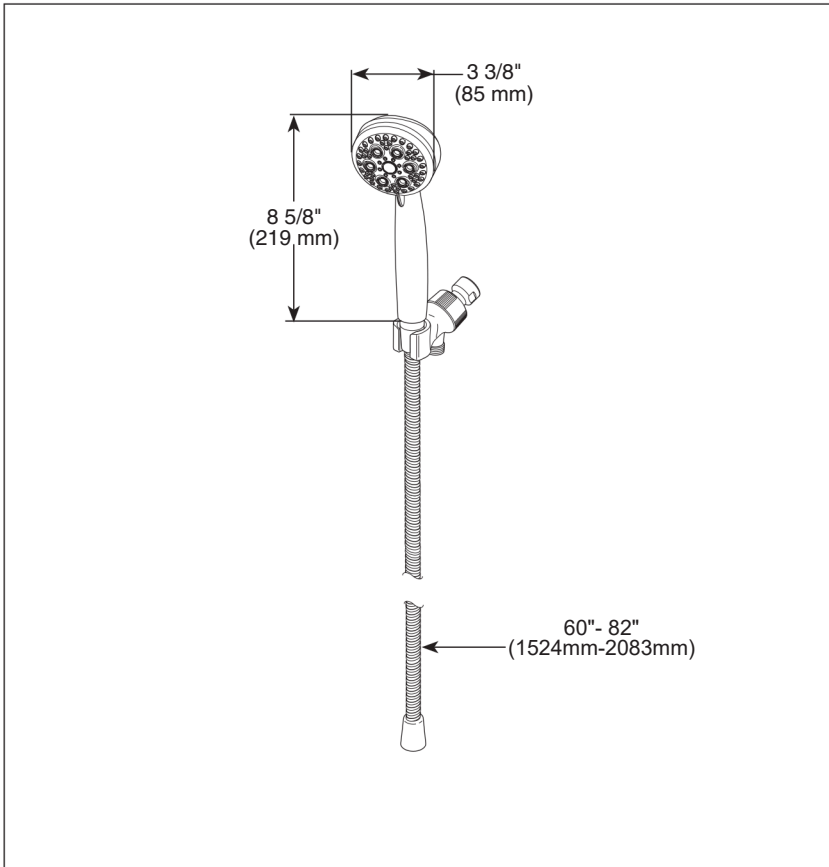
- Designed for use with Groomer's Best bathing tubs
- Heavy-duty ADA-compliant Delta sprayer
- Flow rate: 1.75 gpm @80 psi
- One year warranty



*Designed by Experts, Trusted by Groomers*



54434-P 18-PK



p Designate proper finish suffix



see what Delta can do<sup>SM</sup>

## HAND SHOWER

- 5-SpraySetting HandShower
- Adjustable Wall Mount

### FEATURES:

- Touch-Clean<sup>®</sup> Spray Holes

### STANDARD SPECIFICATIONS:

- Max flowrate 1.75 gpm @80 psi, 6.6 L/min @ 550 kPa
- Hand shower with five spray settings - pause is a non-positive shut-off
- 60" - 82" (1524 mm-2083 mm) stretchable metal hose
- 5 Spray settings include: Full Body spray, Fast Massage spray, Full Spray with Massage, High Efficiency Spray and Pause

### WARRANTY:

- Parts and Finish—Lifetime limited warranty; or for commercial purchasers, 10 years for multi-family residential (apartments and condominiums) and 5 years for all other commercial uses, in each case from the date the product is received by the original purchaser or their authorized representative (installation contractor, etc.).
- Please go to [www.deltafaucet.com](http://www.deltafaucet.com) for the complete details of our limited warranty.

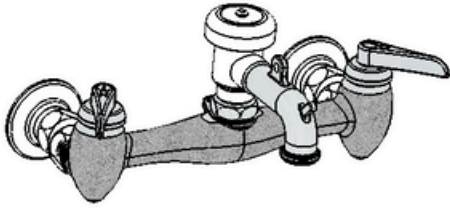


### COMPLIES WITH:

- ASME A112.18.1/CSA B125.1
- EPA WaterSense<sup>®</sup>

ICC/ANSI A117.1

120 Series

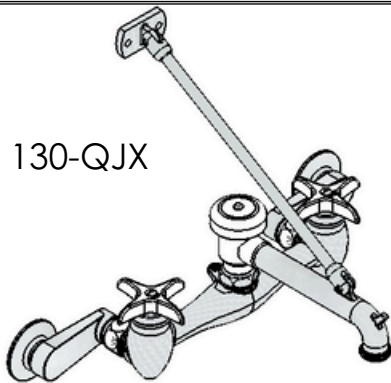


## 120 & 130 & 140 Series

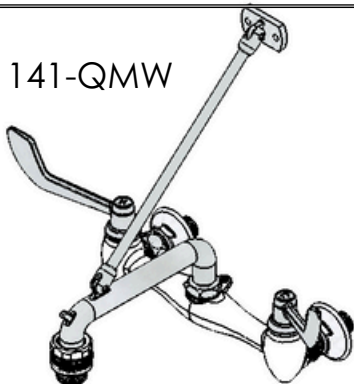
131-EA



130-QJX



141-QMW



### Features: Cast Brass Body

Chrome Plated Rough Or Polished Brass

Compression Or Quarter Turn Valves

Replaceable Seats

120 = 4" Spout Standard Vacuum Breaker Rough Chrome

121 = 4" Spout Standard Vacuum Breaker Polished Chrome

130 = 6.5" Spout Standard Vacuum Breaker Rough Chrome  
= 6.5" Spout Standard Vacuum Breaker Polished Chrome

131 = 6.5" Spout Outlet Vacuum Breaker Rough Chrome  
= 6.5" Spout Outlet Vacuum Breaker Polished Chrome

140

=

141

Add the Letters for the following features if you want them added to the finished assembly.

The(\*) indicates that the part is the standard normal part for this assembly and requires no lettering

(\*) = Compression Valves (Q) = Quarter Turn Ceramic Disk Valves (\*) = (M) =

3/16 Eccentric Female Flange (7&5/8 - 8&3/8" supply centers)

3/64 Eccentric Male Flange (7&29/32 - 8&3/32" supply centers)

(E) = 1" Eccentric Female Flange ( 6 - 10" supply centers)

(J) = 2.5" Eccentric Female Flange ( 3 - 13" supply centers)

(\*) = Blade Handle

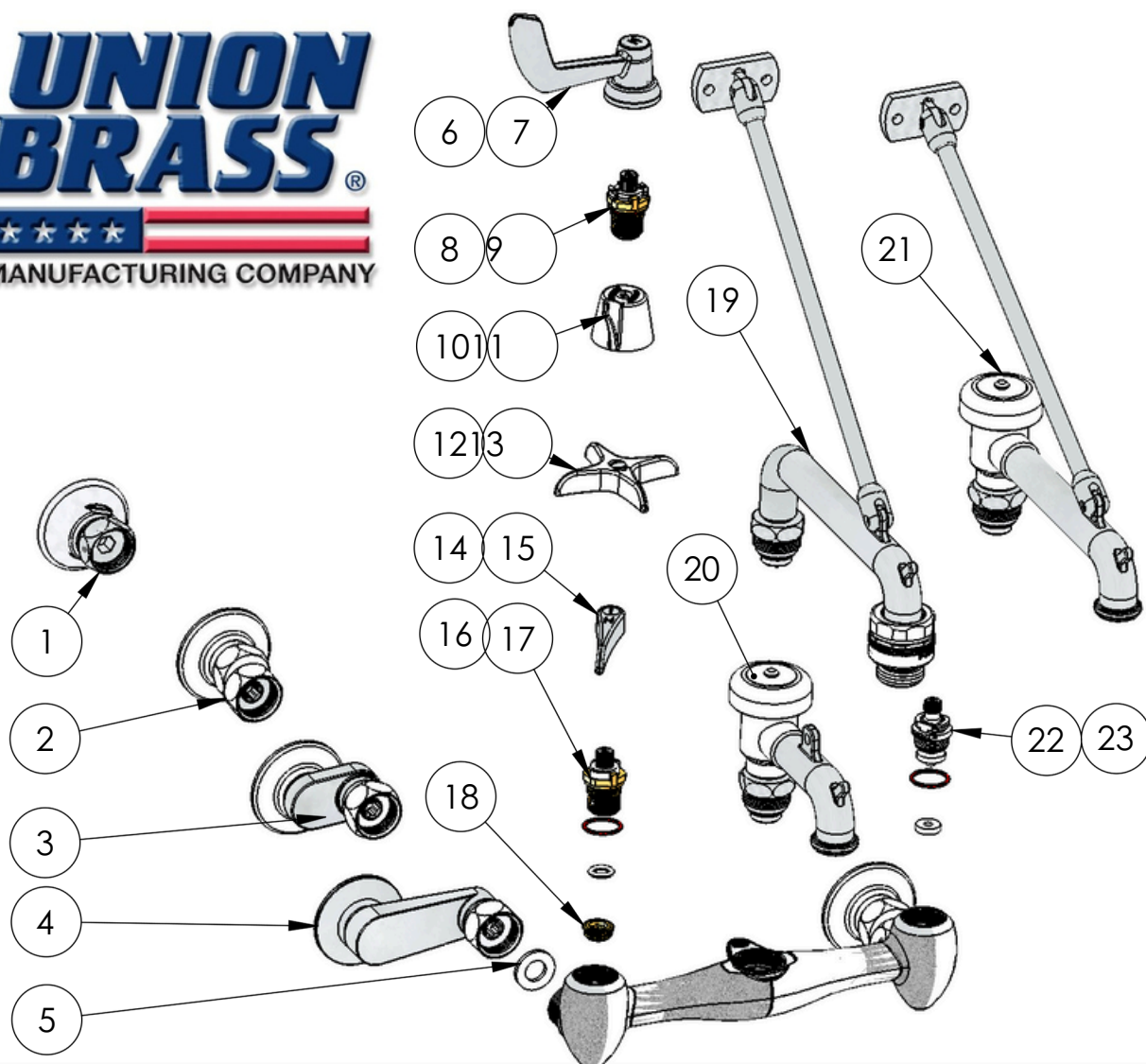
(A) = Wall mount Style Handle

(X) = Cross Handle

(W) = Wrist Blade Handle

## American Craftsmanship Since 1892

When Ordering Specify Complete Model Number



### 120, 130, 140 Series Mopsink Parts List

Item #	Part #	Description	Item #	Part #	Description
1	80025	Male Flange Assembly	15	80304	Blade Handle Assembly - Cold
2	88551	Female Flange Assembly	16	80079	1/4 Turn Ceramic Cartridge - Hot
3	89225	Eccentric Flange Assembly		12274	O-Ring
4	88235	Extra Wide Ecc. Flange Ass'y		13717	Fibre Washer
5	13703	Fibre Washer	17	80080	1/4 Turn Ceramic Cartridge - Cold
6	88184	Hospital Handle Assembly - Hot		12274	O-Ring
7	88185	Hospital Handle Assembly - Cold		13717	Fibre Washer
8	80089	Industrial 1/4 Turn Ceramic- Hot	18	12639	Seat
9	80090	Industrial 1/4 Turn Ceramic- Cold	19	80075	Long Spout W/Outlet Vacuum Breaker
10	80349	Handle Assembly - Hot	20	80085	Short Spout With Vacuum Breaker
11	80350	Handle Assembly - Cold	21	80095	Long Spout With Vacuum Breaker
12	80307	Cross Handle Assembly - Hot	22	88537	Compression Valve Ass'y - Hot
13	80308	Cross Handle Assembly - Cold	23	88538	Compression Valve Ass'y - Cold
14	80303	Blade Handle Assembly - Hot			

**UNION BRASS MANUFACTURING COMPANY**

2955 Lone Oak Circle, Eagan, MN 55121 Phone(651)454-8858 Fax(651)454-1228

WWW.UNIONBRASS.COM