

ADA Plumbing Kit

Model: GBPK-ADA



INCLUDED:

- Union Brass 4" on-center (2) handle chrome faucet
- ADA-compliant Delta sprayer
- 3½" Spin-N-Lock sink basket strainer
- Mesh strainer 1½"
- PVC "P" trap
- Stainless steel sprayer holder

Features

- Designed for use with Groomer's Best bathing tubs
- Heavy-duty ADA-compliant Delta sprayer
- Flow rate: 1.75 gpm @80 psi
- One year warranty



Designed by Experts, Trusted by Groomers

UNION BRASS MFG. CO.

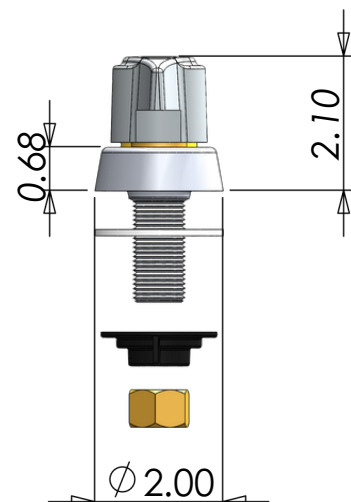
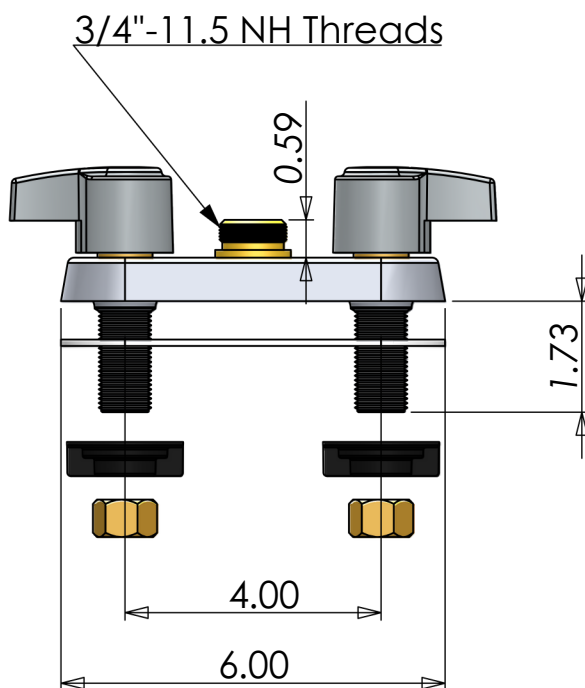
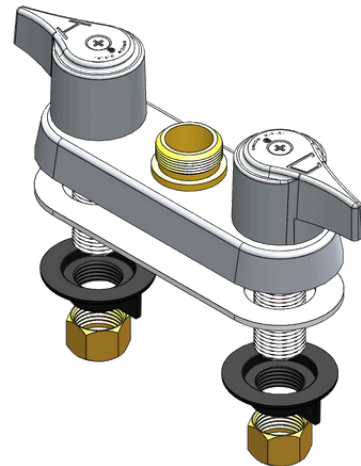
2955 Lone Oak Circle, Eagan, MN 55121
Phone (651) 454-8858 Fax (651) 454-1228
WWW.UNIONBRASS.COM

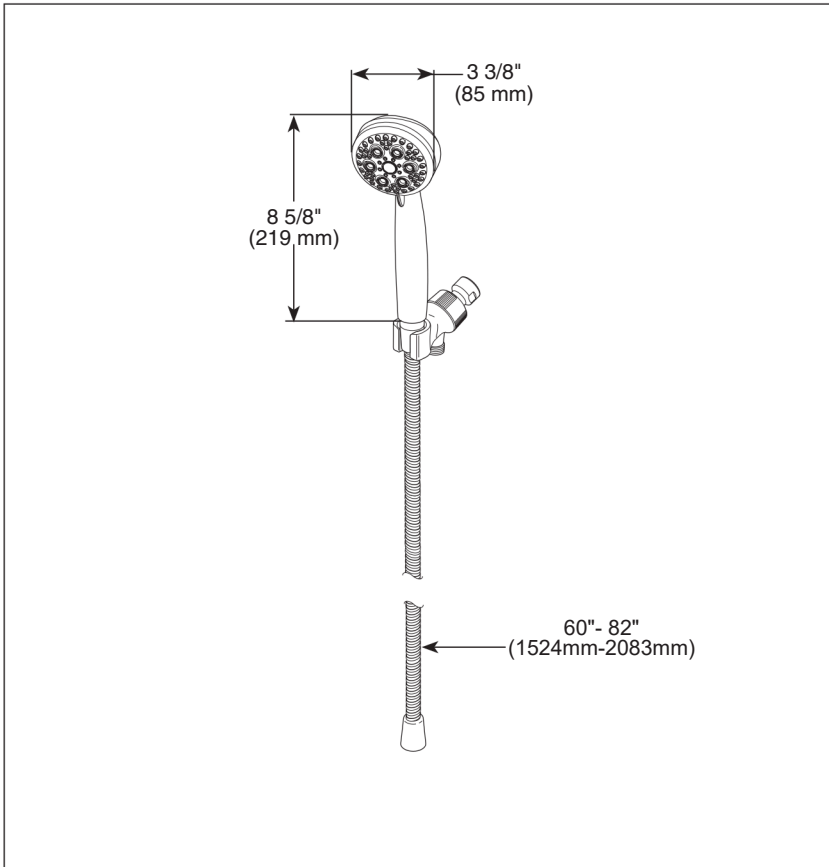
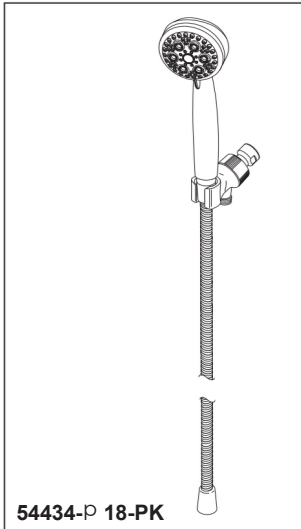


Model Number: 747X-H
Wall or Deck Mount
Faucet with Garden Hose
Thread Adapter

Features & Specifications

- Cast brass body
- Replaceable seats & stems
- Ceramic, 1/4 turn stems
- 1/2" NPS male shanks
- Polished chrome finish





p Designate proper finish suffix



see what Delta can doSM

HAND SHOWER

- 5-SpraySetting HandShower
- Adjustable Wall Mount

FEATURES:

- Touch-Clean[®] Spray Holes

STANDARD SPECIFICATIONS:

- Max flowrate 1.75 gpm @80 psi, 6.6 L/min @ 550 kPa
- Hand shower with five spray settings - pause is a non-positive shut-off
- 60" - 82" (1524 mm-2083 mm) stretchable metal hose
- 5 Spray settings include: Full Body spray, Fast Massage spray, Full Spray with Massage, High Efficiency Spray and Pause

WARRANTY:

- Parts and Finish—Lifetime limited warranty; or for commercial purchasers, 10 years for multi-family residential (apartments and condominiums) and 5 years for all other commercial uses, in each case from the date the product is received by the original purchaser or their authorized representative (installation contractor, etc.).
- Please go to www.deltafaucet.com for the complete details of our limited warranty.



COMPLIES WITH:

- ASME A112.18.1/CSA B125.1
- EPA WaterSense[®]

ICC/ANSI A117.1